

**RoHS MEASUREMENT AND TEST REPORT**

**For**

**Manufacturer: Green Smoke,Inc.**

**Address: 3551 Magellan Circle #426 Aventura,FL 33180 USA.**

**Product: Green Smoke**

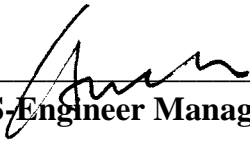
**Type/Model: Green Smoke**

**Test Engineer: Mack S**

**Test Date: April 21, 2009**

**Issuance Date: April 27, 2009**

**Reviewed By:** \_\_\_\_\_

  
**UTS-Engineer Manager**

**Testing Required:**

**1) As specified by client, to determine the lead, Cadmium, Mercury and Hexavalent Chromium content in the submitted sample in accordance with Directive 2002/95/EC(RoHS).**

**2) As specified by client, to determine the PBB & PBDE content in the submitted sample in accordance with Directive 2002/95/EC(RoHS).**

**Test Standards:**

Testing Item	Pretreatment method	Measuring method	Report Limit
Lead (Pb)	EPA3050B	EPA6010(ICP-OES)	2ppm
Cadmium (Cd)	EN1122:2001	EPA6010(ICP-OES)	2ppm
Mercury (Hg)	EPA3052	CV-AAS	2ppm
Chromium (Cr <sup>6+</sup> )	EPA3060A	EPA7196A(UV-VIS)	2ppm
PBBS	EPA3540C	EPA8082(GC-MS)	5ppm
PBDES	EPA3540C	EPA8082(GC-MS)	5ppm

**Remarks:**

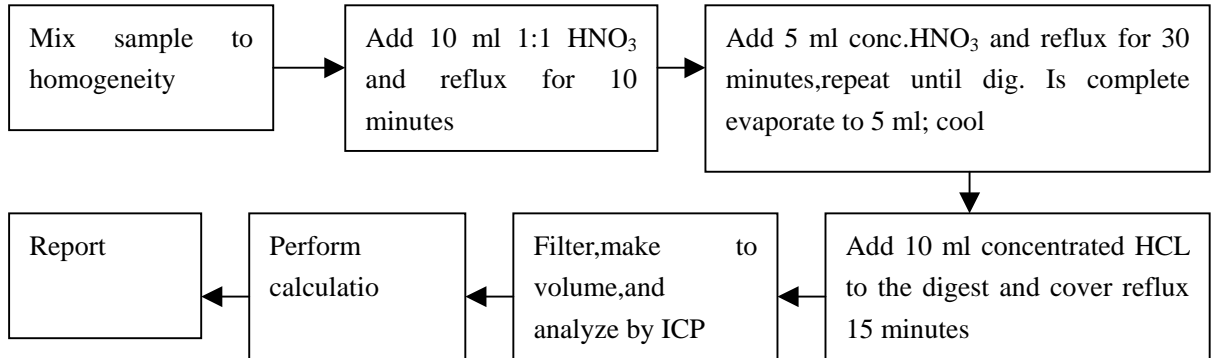
1. The test report is valid for above tested sample only and shall not be reproduced in part without written approval of the company.
2. Characterization & Condition of sample: Normal.
3. Ambient Condition During Testing: (15~22)°C, (20~40)%RH.

**Conclusion:**

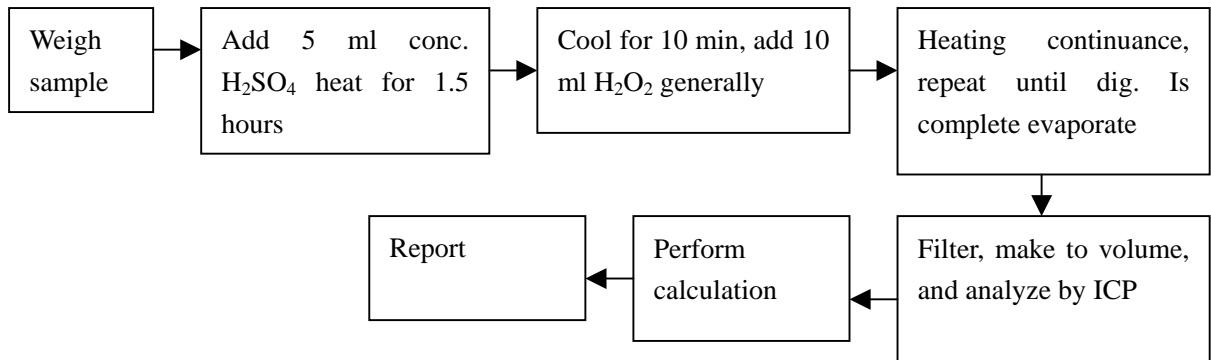
When tested as all below, the result shown on these reports do not exceed the limit in commission decision of 18 Aug 2005 amending Directive 2002/95/EC (RoHS) notified under document 2005/618/EC.

**Test flow:**

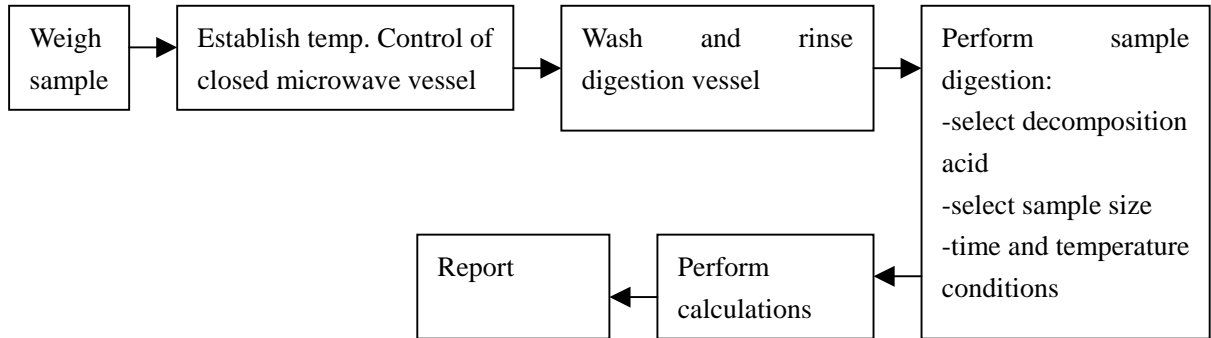
**1. To Determine Lead Content:**



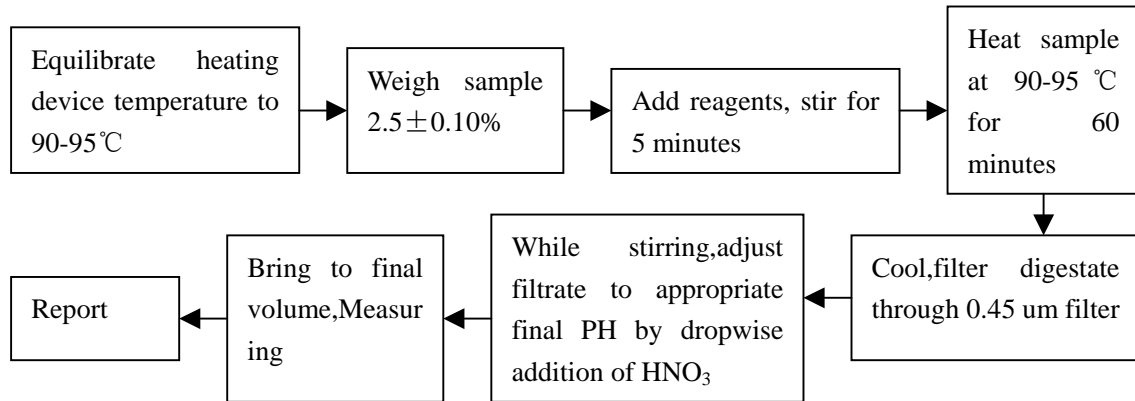
**2. To Determine Cadmium Content:**



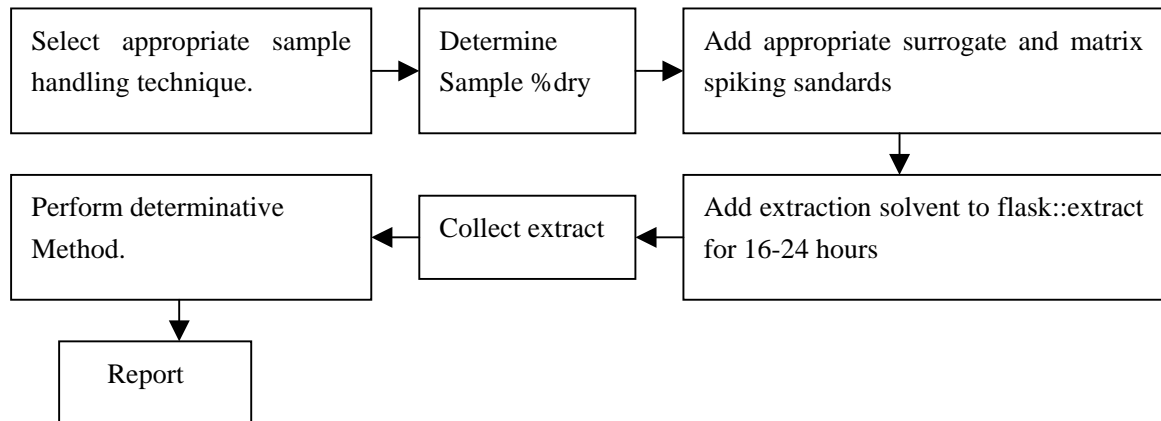
**3. To Determine Mercury Content:**



**4. To Determine Hexavalent Chromium Content:**



**5. To Determine PBB<sub>s</sub>/PBDE<sub>s</sub> Content:**



NO.	SAMPLES NAME	SPECIFICATION	TEST REPORT NO.	DESCRIPTION
1	CATRIDGE BOX, INHALER,CAP, CAFRIDGE CAP	ABC	STH0666412	BLACK PLASTIC
2	COPPER STRAP	----	SH545401/CHEM	GOLDEN METAL PLATE
3	RESET SHEET	----	SH584861/CHEM	GOLDEN METAL
4	PAINT	----	2049416/EC	TRANSPARENT BROWN LIQUID
5	SOLDER WIRE	FREE LEAD	SH582111/CHEM	SILVERY METAL WIRE
6	SPRING	72A	SH536219/CHEM	BLACK METAL
7	SOLDER PASTE	FREE LEAD TYPE	GZSCR050858146/LP	TRANSPARENT LIQUID
8	PAINT	----	SZTYR050820537/LP	PAINT
9	SPUNG COTTON	----	GZSCR050105698/LP	WHITE COTTON
10	STEEL RING, E-CIG SHELL	----	GZSCR0512104970/LP	SILVERY METAL
11	HOT WIRE	----	SZTYR051138413/LP	SIVERY METAL
12	PCB	----	2044952/EC	SEMI-TRANSPATENT GLASS FIBRE W/GREEN COATING W/SILVERY METAL W/WHITE PRINTING
13.1	ELECTRONIC		GZ0602012867/CHEM	BLACK PLASTIC
13.2	WIRE	----		COPPERY METAL WIRE
14.1	IC		SH674362/CHEM	SIVERY METAL PIN
14.2		----		BLACK PLASTIC
15	CHIP RESISTOR	----	CE/2006/41720	CHIP CHPACITOR

1) Test Result: Heavy Metals (Pb, Cd, Cr6+,Hg) Tests

Element	Pb	Cd	Cr6+	Hg
Limit:	1000(mg/kg)	100(mg/kg)	1000(mg/kg)	1000(mg/kg)
1	31	25	N.D.	N.D.
2	48	3	N.D.	N.D.
3	21	N.D.	N.D.	N.D.
4	7	N.D.	N.D.	N.D.
5	29	N.D.	N.D.	N.D.
6	N.D.	N.D.	N.D.	N.D.
7	N.D.	N.D.	N.D.	N.D.
8	N.D.	N.D.	N.D.	N.D.
9	N.D.	N.D.	N.D.	N.D.
10	10	N.D.	N.D.	N.D.
11	62	N.D.	N.D.	N.D.
12	26	N.D.	N.D.	N.D.
13.1	10	N.D.	N.D.	N.D.
13.2	122	4	N.D.	N.D.
14.1	N.D.	N.D.	N.D.	N.D.
14.2	7	N.D.	N.D.	N.D.
15	10.5	N.D.	N.D.	N.D.

- ◆ “N.D.” means “Not Detected”, method detection limit=2mg/kg.
- ◆ “\*” means be exempted from RoHS Directive.

**1) Test Result: Brominated Flame Retardants (PBBs&PBDE<sub>s</sub>) Tests**

PBBs	1	4	5	9	12	13.1	14.2	15
MONOBROMOBIPHENYL	N.D.	N.D.	N.D.	N.D.	N.D.	N.D.	N.D.	N.D.
DIBROMOBIPHENYL	N.D.	N.D.	N.D.	N.D.	N.D.	N.D.	N.D.	N.D.
TRIBROMOBIPHENYL	N.D.	N.D.	N.D.	N.D.	N.D.	N.D.	N.D.	N.D.
TETRABROMOBIPHENYL	N.D.	N.D.	N.D.	N.D.	N.D.	N.D.	N.D.	N.D.
PENTABROMONIPHENYL	N.D.	N.D.	N.D.	N.D.	N.D.	N.D.	N.D.	N.D.
HEXQBROMOBIPHENYL	N.D.	N.D.	N.D.	N.D.	N.D.	N.D.	N.D.	N.D.
HEPTABROMOBIPHENYL	N.D.	N.D.	N.D.	N.D.	N.D.	N.D.	N.D.	N.D.
OCTABROMOBIPHENYL	N.D.	N.D.	N.D.	N.D.	N.D.	N.D.	N.D.	N.D.
NONABROMOBIPHENYL	N.D.	N.D.	N.D.	N.D.	N.D.	N.D.	N.D.	N.D.
DECABROMOBIPHENYL	N.D.	N.D.	N.D.	N.D.	N.D.	N.D.	N.D.	N.D.
Sum of PBDE <sub>s</sub>	N.D.	N.D.	N.D.	N.D.	N.D.	N.D.	N.D.	N.D.
PBDE <sub>s</sub>	1	4	5	9	12	13.1	14.2	15
MONOBROMODIPHENYL ETHER	N.D.	N.D.	N.D.	N.D.	N.D.	N.D.	N.D.	N.D.
DIBROMODIPHENYL ETHER	N.D.	N.D.	N.D.	N.D.	N.D.	N.D.	N.D.	N.D.
TRIBROMODIPHENYL ETHER	N.D.	N.D.	N.D.	N.D.	N.D.	N.D.	N.D.	N.D.
TETRABROMODIPHENYL ETHER	N.D.	N.D.	N.D.	N.D.	N.D.	N.D.	N.D.	N.D.
PENTABROMONIPHENYL ETHER	N.D.	N.D.	N.D.	N.D.	N.D.	N.D.	N.D.	N.D.
HEXABROMODIPHENYL ETHER	N.D.	N.D.	N.D.	N.D.	N.D.	N.D.	N.D.	N.D.
HEPTABROMODIPHENYL ETHER	34	N.D.	N.D.	N.D.	N.D.	N.D.	N.D.	N.D.
OCTABROMODIPHENYL ETHER	41	N.D.	N.D.	N.D.	N.D.	N.D.	N.D.	N.D.
NONABROMODIPHENYL ETHER	51	N.D.	N.D.	N.D.	N.D.	N.D.	N.D.	N.D.
DECABROMODIPHENYL ETHER	66	N.D.	N.D.	N.D.	N.D.	N.D.	N.D.	N.D.
Sum of PBDE <sub>s</sub>	202	N.D.	N.D.	N.D.	N.D.	N.D.	N.D.	N.D.

◆ PBB<sub>s</sub> Limit = 1000 ppm, PBDE<sub>s</sub> Limit = 1000 ppm

◆ “N.D.” means “Not Detected”, method detection limit = 5mg/kg.

**Test Sample:**  
**Green Smoke,Inc.**

Figure 1



\*\*\*\*\* (END OF REPORT) \*\*\*\*\*